

LONGSPAN 600 SYSTEM & MESH DECKING



The SCHAEFER Group



Fritz Schaefer GmbH, Germany



Simpang Renggam Factory, Malaysia



Kunshan Factory, China

Since its inception in 1937 by Mr. Fritz Schäfer, SSI SCHAEFER has been one of the world's leading suppliers of a comprehensive range of high-quality storage systems for warehouses, manufacturing plants and commercial offices, and includes a whole range of systems and containers for the waste-handling and recycling sector.

Employing over 7,500 people in 50 offices, from 35 countries on 4 continents, SSI SCHAEFER is a stable, privately owned company with more than 70 years of proud heritage. It is also the single world's largest supplier of industrial storage systems.

■ SSI SCHAEFER IN ASIA

SSI SCHAEFER has operated in Asia for more than 23 years, and now has 12 offices in 11 countries covering the Middle East, China, the ASEAN region, and Australia. Starting with the Interlock Pallet Racking range in 1989, SSI SCHAEFER now produces an extensive range of SSI SCHAEFER products in its state of the art manufacturing plants situated in Malaysia and China.

■ ACCREDITATIONS

SSI SCHAEFER's Interlock Pallet Racking Systems have been independently tested in both UK and Germany in accordance to FEM 10.02.02 Codes of Practice. The systems also obtained accreditations of AS 1250, AS 1538, RMI, SEMA (Storage Equipment Manufacturers' Association) codes and ISO 9001 compliance. Today, Interlock Pallet Racking is widely accepted and firmly established as the market leader in APEC.

■ SOLUTIONS THAT FIT

International presence, outstanding customer service, decades of experience, and first-class teamwork, provide a one-stop shop convenience and major benefits for its extensive client base when it comes to cost effective solutions, project planning and implementation. From a plastic container to sophisticated, cutting edge automation technology, SSI SCHAEFER is equipped to assist customers with professional Solutions That Fit.



SSI SCHÄFER NOELL GMBH

SSI SCHAEFER NOELL GMBH in Giebelstadt, Germany designs and implements integrated logistics systems. Acting as the general contractor, SSI SCHAEFER NOELL has completed over 300 systems worldwide.

Our capabilities include system design and consulting, implementation of turnkey installations, as well as customer oriented after sales service and maintenance packages.



SSI SCHAEFER PEEM GmbH, Austria

SSI SCHÄFER PEEM GMBH

SSI SCHAEFER PEEM GMBH in Graz, Austria, focuses on modular picking applications.

SSI SCHAEFER PEEM plans, develops and manufactures highly dynamic conveyor systems for bins and cardboard boxes as well as automated order fulfillment systems.

Longspan 600 (LS600) System

The latest Longspan 600 (LS600) system fabricated by SSI SCHAEFER is a result of adapting the strength and quality of our Germany's original WR600 system for the needs of customers in the Asia Pacific (APAC) and Middle East region.

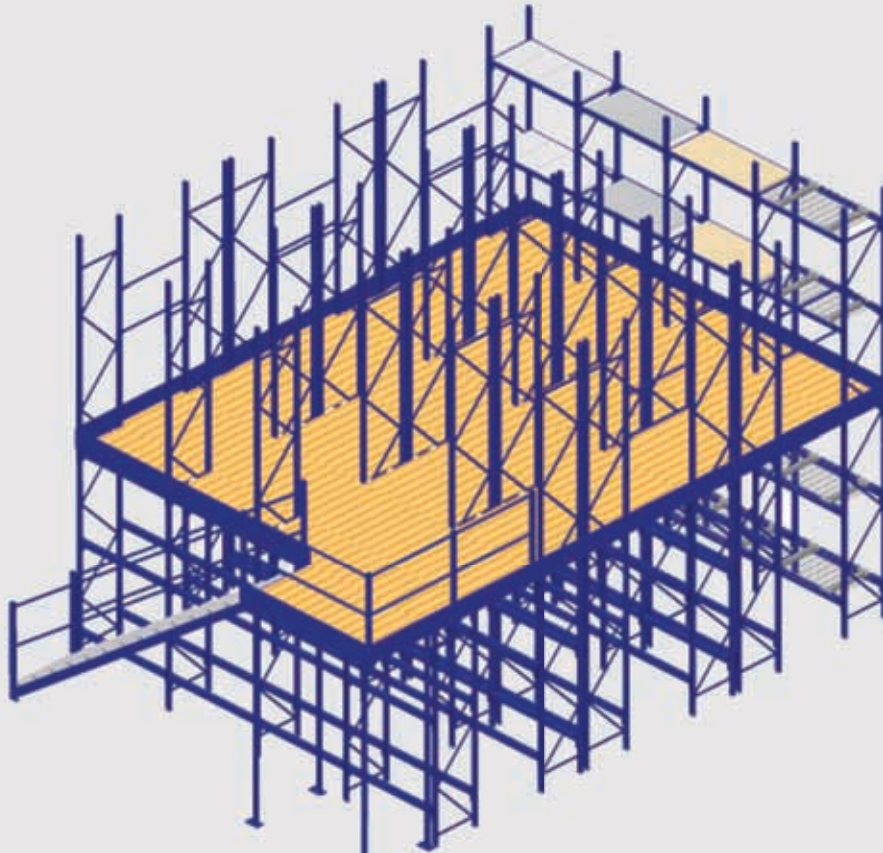
Warehousing and order picking are constantly challenged by the extensive variety of products presented and the limited storage space available. The LS600 system is hence designed to optimize storage options within minimum space, for all medium-duty warehouse applications.

- **HAND-LOADED STORAGE**

The LS600 system is intended for hand loaded storage method, where products stored is placed onto the beams or shelves, and picked from them manually.

- **MULTI-TIER STORAGE**

The new LS600 system is a much more versatile option. Not only can the customer choose to expand storage capacity vertically when the need arise, the LS600 system also offers a comprehensive range of decking and accessory options.



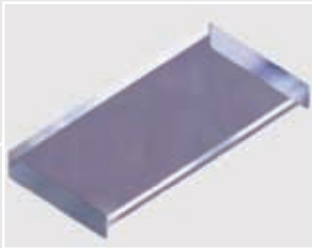
- **DESIGN & SAFETY STANDARDS**

The LS600 system is designed in accordance with FEM 10.2.02, FEM 10.2.03 and FEM 10.2.04 international standards. Standard requirements for SEMA codes, ISO, DIN, JIS and safety standards are also met.

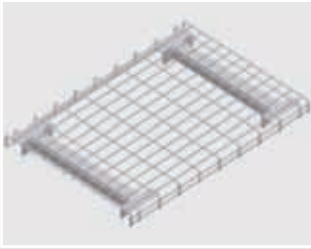
- **BASIC TECHNICAL DATA**

Frame Load	up to 5000 kg
Load/ Level	up to 1000 kg
Clear Entry	3,000 mm
Frame Depth	1,200 mm
Frame Height	Any-subjected to bay load

LS600 System



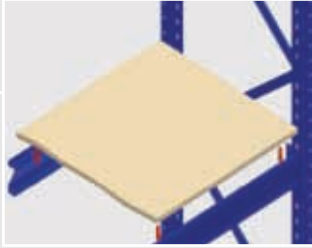
Steel Decking



Wire Mesh Decking



Pallet Support Bar



Plywood Decking

Other Options



Back stopper



Wire Mesh Side & Back Panel



Steel Side & Back Panel



Tube Dividers



Pallet Support Bar

SSI SCHAEFER Mesh Decking & Panel

Besides the conventional plywood and steel decking panels, SSI SCHAEFER Mesh Decking is also widely used in many industrial storage applications in view of its following features:

- **Better Fire Safety**
Mesh holes allows for quick sprinkler activation and more effective water penetration
- **Better Visibility**
Improved lighting penetration from top-down ceiling lights
- **Easy Handling**
No fixing and fastening; quick and easy to install
- **High Durability**
Maintenance free
- **Versatile**
Applicable for cold rooms and ambient warehouses
- **Flexible**
Suitable for storage of pallets, cartons and small boxed parts
- **Improved Cleanliness**
No risk of dirt or dust collection



Common Application

(A) For pallets or crates with material handling equipment

- No double handling or extra pallet required if the pallet/crates are smaller than existing frame size
- Eliminates risk of pallet slippage, and improves operator efficiency and safety
- Reduces pallet hire costs and product damage

(B) For document storage or carton boxes

- Ideal for order picking with increased pick face locations
- Highly flexible for stock organization and identification
- Can be used with waterfall version over beams or flush version for stepped beams

SSI SCHAEFER Mesh Grating

Besides the conventional plywood and steel decking panels, SSI SCHAEFER Mesh Decking is also widely used in many industrial storage applications in view of its following features:

- **Improved Fire Safety**

Allows for quick sprinkler activation and more effective infiltration

- **Better Visibility**

Improved lighting penetration from top-down ceiling lights

- **Heavy Duty**

Utilizing Steel bearing bars and cross bars interlocked can be designed to support pallet load of up to 1500kgs

- **Quality Material & Surface**

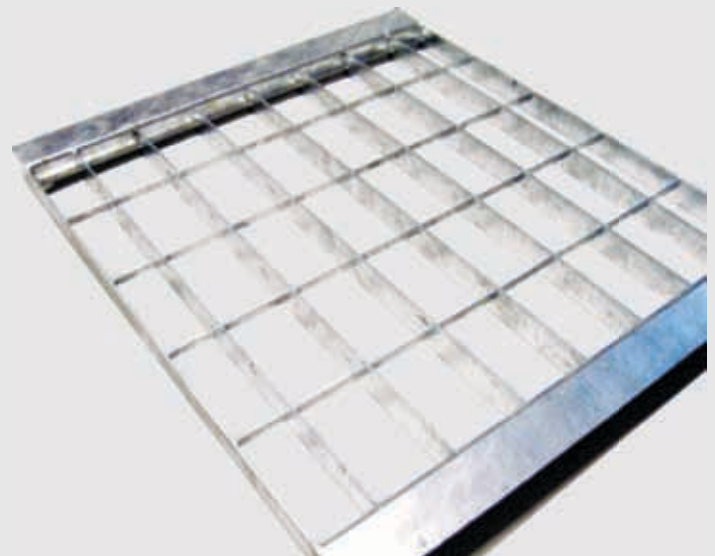
Steel gratings are usually hot dip galvanized to DIN EN ISO 1461. 99.9% pure zinc coating ensures no peel off under normal mechanical load conditions.

- **Anti-skid Design**

Eliminates danger of skidding or slipping during loading and unloading of pallets by MHE

- **Customization**

Possible in terms of banding bars, bearing bars, cross bars, mesh sizes, landings, notching and angel collars etc. Constant weight loading, no stiffeners no warpage



Drop-in Mesh grating



Drop-Over Mesh grating

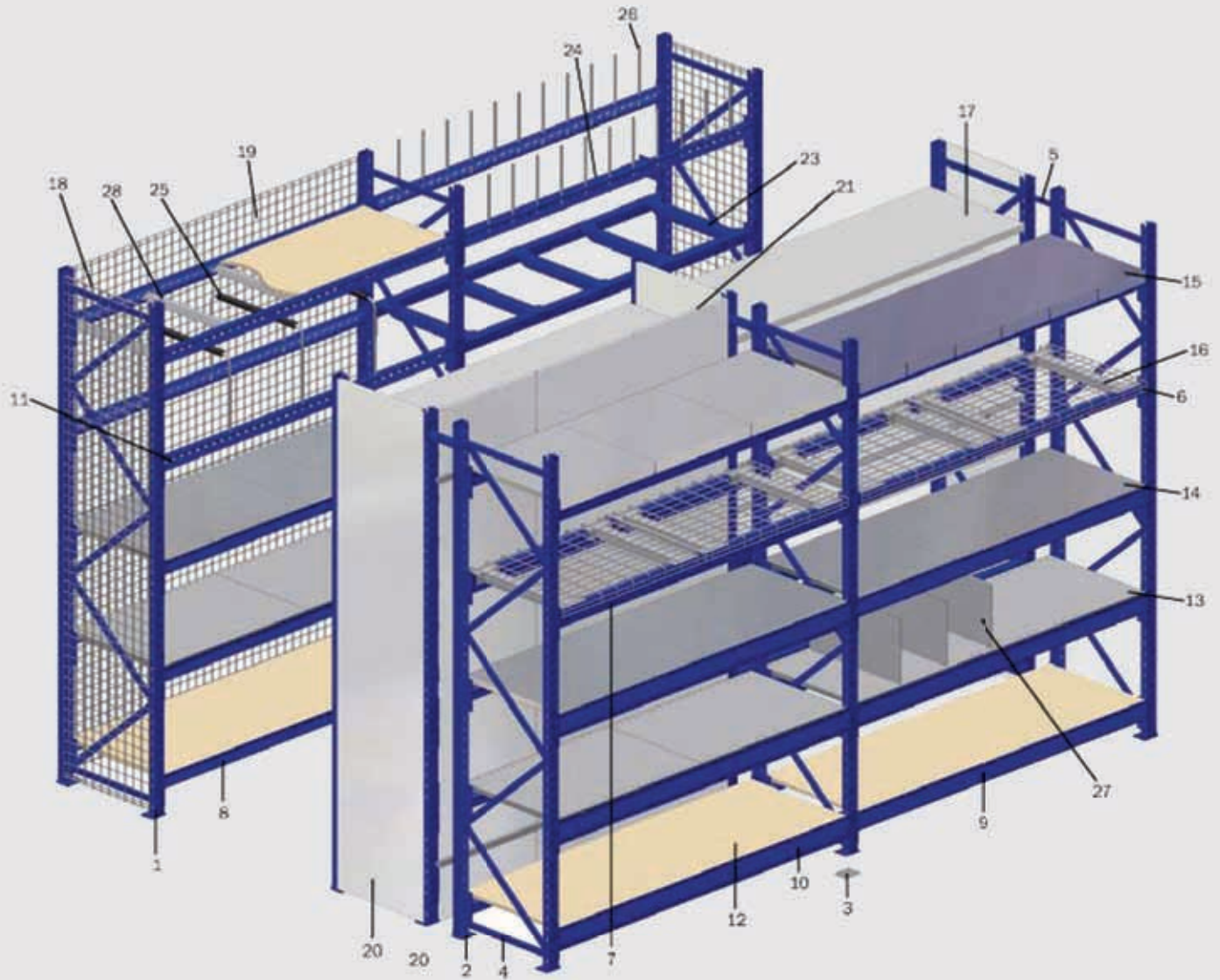
Common Application

(A) For pallets or crates with material handling equipment

- More heavy duty than wire mesh decking
- Can choose either “Drop-over” or “Drop-in” placement methods
- Highly durable and long-lasting, despite adverse warehouse conditions
- Warehouse operational efficiency and safety for storage of non standard sized crates or pallets



LS600 System



Legends:

- | | | | |
|--------------|-----------------------------|---------------------------|--------------------------|
| 1 Upright | 8 Z-Beam 65 | 15 Steel deck panel (Lip) | 22 Holding rail |
| 2 Baseplate | 9 Z-Beam 90 | 16 Wire mesh deck | 23 Support bar |
| 3 Shimplate | 10 Z-Beam 110 | 17 Shelf | 24 Back stopper |
| 4 Bracing | 11 KTRZ Beam | 18 Mesh side panel | 25 Tube divider |
| 5 Row spacer | 12 Plywood deck | 19 Mesh back panel | 26 Rod |
| 6 U-Beam 50 | 13 Dividing shelf | 20 Steel side panel | 27 Free standing divider |
| 7 U-Beam 80 | 14 Steel deck panel (Flush) | 21 Steel back panel | 28 Cross beam support |

Components



Upright

End connector

Bracing

Safety Lock

U-Beam

Z-Beam

Row spacer

REGIONAL HEAD OFFICE**SINGAPORE**

Schaefer Systems International Pte Ltd
73, Tuas Avenue 1
Singapore 639512
Phone +65/ 6863 0168
Fax +65/ 6863 0288
eMail singapore@ssi-schaefer.sg
www.ssi-schaefer.sg

AUSTRALIA

SCHAEFER Systems International Pty Limited
(Sydney's Office)
8/30 Heathcote Road,
Moorebank NSW 2170, Australia
Phone +61/ 2/ 9824 3844
Fax +61/ 2/ 9824 3855
eMail schaeferssi@schaeferssi.com.au
www.ssi-schaefer.com.au

(Melbourne's Office)

367-373 South Gippsland Hwy,
Dandenong South VIC 3175, Australia
Phone +61/ 3/ 9799 2882
Fax +61/ 3/ 9799 2884

CHINA

SSI SCHAEFER Systems International (Kunshan) Co., Ltd
Room 13-F, West Block,
Shanghai Hi-Tech King World,
668 Beijing Dong Lu, Shanghai, China 200001
Phone +86/ 21/ 5308 3678
Fax +86/ 21/ 5353 0955
eMail shanghai@ssi-schaefer.cn
www.ssi-schaefer.cn

HONG KONG

Schaefer Systems International Limited
Unit 2609, 26/F Peninsula Tower,
No. 538 Castle Peak Road,
Cheung Sha Wan, Kowloon, Hong Kong
Phone +852/ 2959 1838
Fax +852/ 2741 8821
eMail schaefer@ssi-schaefer.hk
www.ssi-schaefer.hk

INDONESIA

PT Sistem Solusindo International
Konika Building 5th Floor, Jalan Gunung Sahari Raya No.
78, Jakarta 10610
Phone +62/ 21/ 425 7648
Fax +62/ 21/ 425 7649
eMail indonesia@ssi-schaefer.co.id
www.ssi-schaefer.co.id

MALAYSIA

SSI Schaefer Systems (M) Sdn Bhd
Suite G-2 N-Tatt Building, No. 2, Jalan TP5
Taman Perindustrian UEP Subang Jaya,
47600 Subang Jaya, Selangor Darul Eshan, Malaysia
Phone +60/ 3/ 8024 6373
Fax +60/ 3/ 8024 6273
eMail malaysia@ssi-schaefer.com.my
www.ssi-schaefer.com.my

MIDDLE EAST

SSI Schaefer LLC
PO Box 37600, Sheik Zayed Road
Dubai, United Arab Emirates
Phone +971/ 4/ 3400 077
Fax +971/ 4/ 3400 078
eMail info@ssi-schaefer.ae
www.ssi-schaefer.ae

PHILIPPINES

SSI SCHAEFER Systems Philippines Inc.
Unit 2403-A, 24th Floor East Tower
Philippine Stock Exchange Centre Condominium
Exchange Road, Ortigas Centre
1600 Pasig City, Philippines
Phone +63/ 2/ 637 9002
Fax +63/ 2/ 638 3771
eMail sales@ssi-schaefer.ph
www.ssi-schaefer.ph

THAILAND

SSI Schaefer Systems International Co., Ltd
3904-5, 9th Floor, BB Building
54 Sukumvit 21 Road (Asoke)
Klong Toey Nua, Wattana
Bangkok 10110, Thailand
Phone +66/ 2/ 204 0205
Fax +66/ 2/ 204 0198
eMail info@ssi-schaefer.co.th
www.ssi-schaefer.co.th

VIETNAM

SCHAEFER SYSTEM INT'L PTE LTD
Floor 7, Green House Building
62A Pham Ngoc Thach St., Dist.3,
HCMC, Vietnam
Phone +84/ 8/ 820 9916
Fax +84/ 8/ 820 9917
eMail sales@ssi-schaefer.vn
www.ssi-schaefer.vn